

PONCET & PONCET

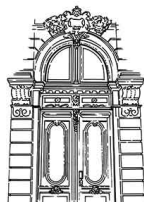
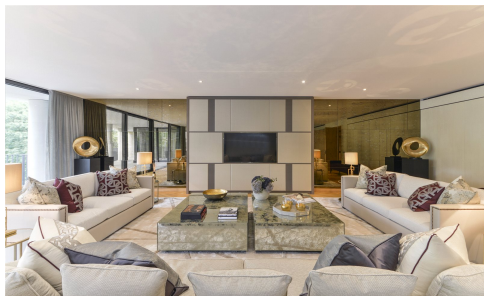
CHRISTIE'S
INTERNATIONAL REAL ESTATE

LONDON - ENGLAND

Prix : 30 170 000 €

Les prix indiqués incluent nos honoraires de négociation.

Réf. LNW180206



www.poncet-poncet.com

Exclusive Affiliate of Christie's International

LONDON - ENGLAND

Réf. LNW180206

One Kensington Gardens, Kensington Road

An exclusive five bedroom apartment overlooking Kensington Palace Gardens.

An exceptional development, designed by Sir David Chipperfield, of 97 apartments situated opposite Kensington Palace and Gardens with world class amenities.

Residents benefit from a 24-hour dedicated concierge, valet parking, health spa, 25m indoor swimming pool, a private health and fitness centre, sauna and steam room, in addition to private treatment rooms.

The development is complete and ready for occupation with show apartments available to view.

Prix : 30 170 000 €

Les prix indiqués incluent nos honoraires de négociation.

